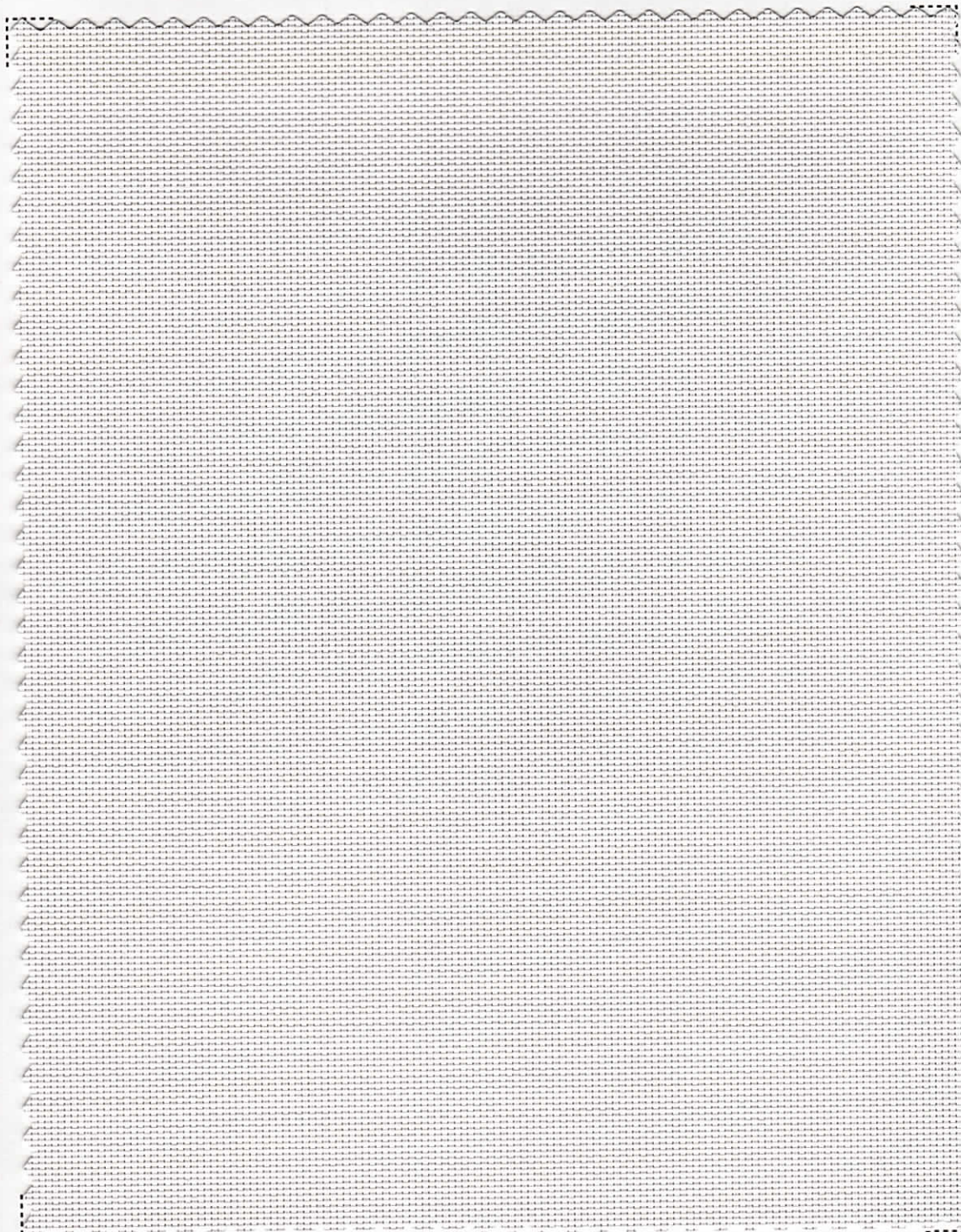
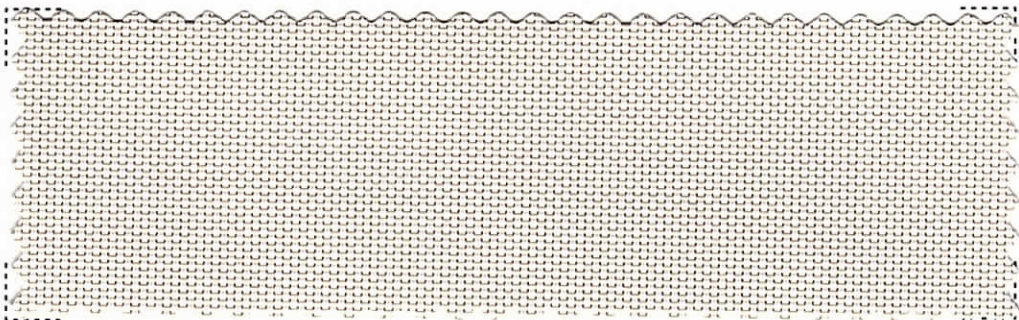


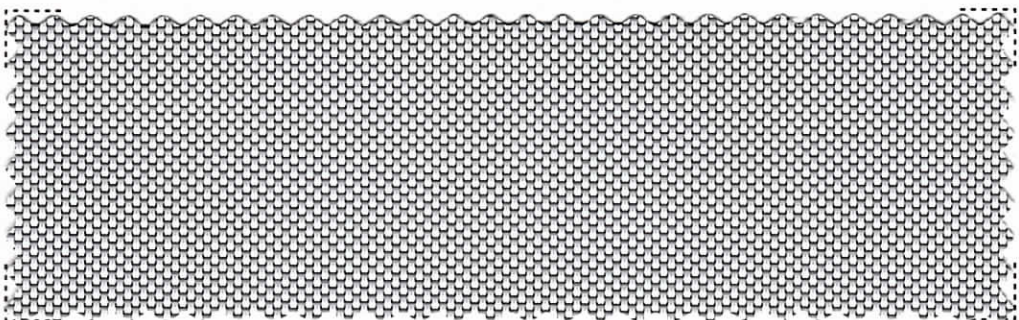
# Toka Uni



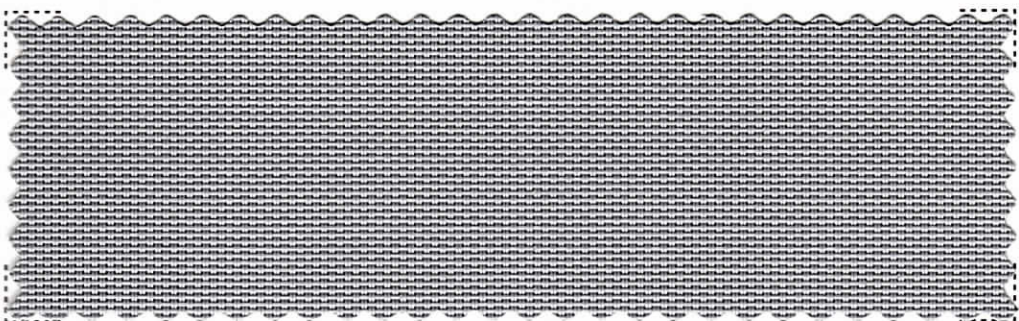




02



03

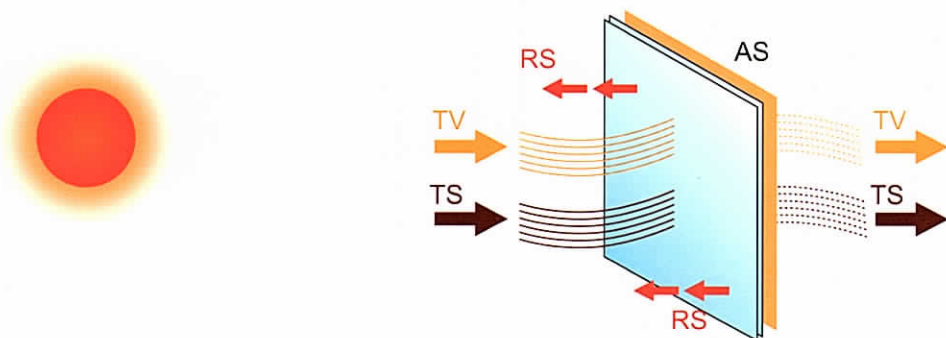


14

## Informazioni Tecniche - Technical Specification

Composizione - Composition	30% Polyester 70% PVC
Fattore d'apertura - Openess factor	+/- 5%
Altezza - Width	cm 300 - 118"
Lunghezza rotoli - Roll length	+/- mt 27,4 +/- 30 yards
Peso - Weight	420g/m <sup>2</sup> +/- 5%
Spessore - Thickness	0.52 mm +/- 5%
Solidità del colore - colour fastness	Class 4.5 (AATCC 16-2003)
Comportamento alla fiamma - Flame resistance	Ignifugo - Flame retardand
Manutenzione - Washing instructions	Pulire con panno umido-Clean with damp cloth

## Fattori termici e ottici - Thermal and optical factors



Metodo di misurazione / Methods of Measuring: ASHRAE Standard 74-1988

Ts - Trasmissione solare / Solar Transmittance

Rs - Riflessione solare / Solar Reflectance

As- Assorbimento solare / Solar Absorptance

Tv-Trasmissione luce / Visible Transmittance

Tuv - Trasmissione UV / UV transmittance

Sc - Coefficiente d'ombra / Shading Coefficients

1/8" Cl - inch Vetro chiaro / Clear Glass

1/4" Cl - inch Vetro chiaro / Clear Glass

1/4" H.A.- inch Termoassorbente / Heat Absorbing

■ Luce-Light

■ Calore-Heat

■ Tessuto-Fabric

SC - %

Colore	Ts%	Rs%	As%	Tv %	Tuv %	1/8"Cl	1/4"Cl	1/4"H.A
01	25	66	9	24	9	0.36	0.36	0.33
02	21	46	33	20	8	0.4	0.38	0.33
03	20	36	44	17	8	0.42	0.4	0.34
14	18	30	52	18	7	0.38	0.38	0.33

