

Toka - Series



Informazioni Tecniche - Technical Specification

Toka1

Composizione - Composition	30% Polyester 70% PVC
Fattore d'apertura - Openess factor	+/- 1%
Altezza - Width	cm 250 - 98"/cm 300 -118"
Lunghezza rotoli - Roll length	+/- mt 27.4 +/- 30 yards
Peso - Weight	480 g/m ² +/- 5%
Spessore - Thickness	0.68mm +/- 5%
Solidità del colore - colour fastness	Class 4.5 (AATCC 16-2003)
Comportamento alla fiamma - Flame resistance	Ignifugo - Flame retardand
Manutenzione - Washing instructions	Pulire con panno umido - Clean with damp cloth

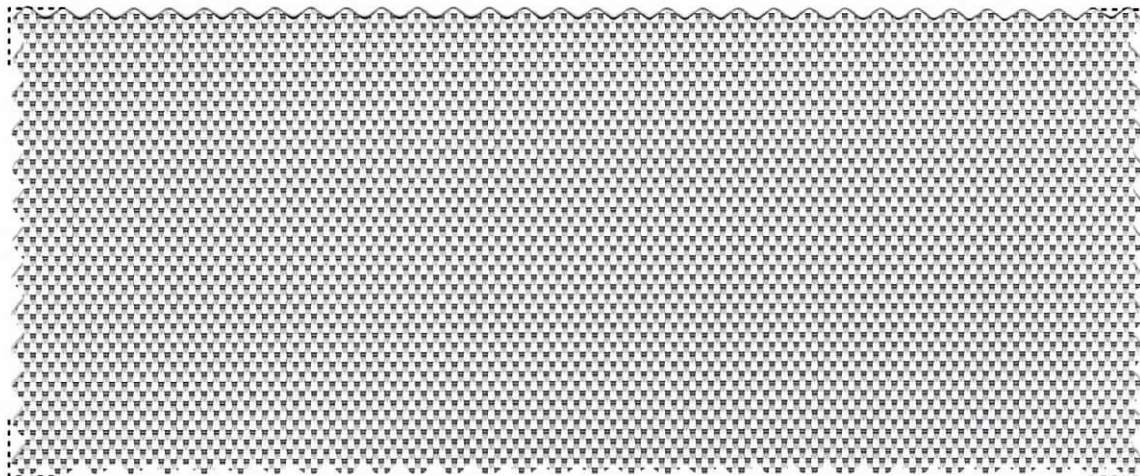
Toka3

Composizione - Composition	30% Polyester 70% PVC
Fattore d'apertura - Openess factor	+/- 3%
Altezza - Width	cm 250 - 98"/cm 300 -118"
Lunghezza rotoli - Roll length	+/- mt 27,4 +/- 30 yards
Peso - Weight	470 g/m ² +/- 5%
Spessore - Thickness	0.58mm +/- 5%
Solidità del colore - colour fastness	Class 4.5 (AATCC 16-2003)
Comportamento alla fiamma - Flame resistance	Ignifugo - Flame retardand
Manutenzione - Washing instructions	Pulire con panno umido - Clean with damp cloth

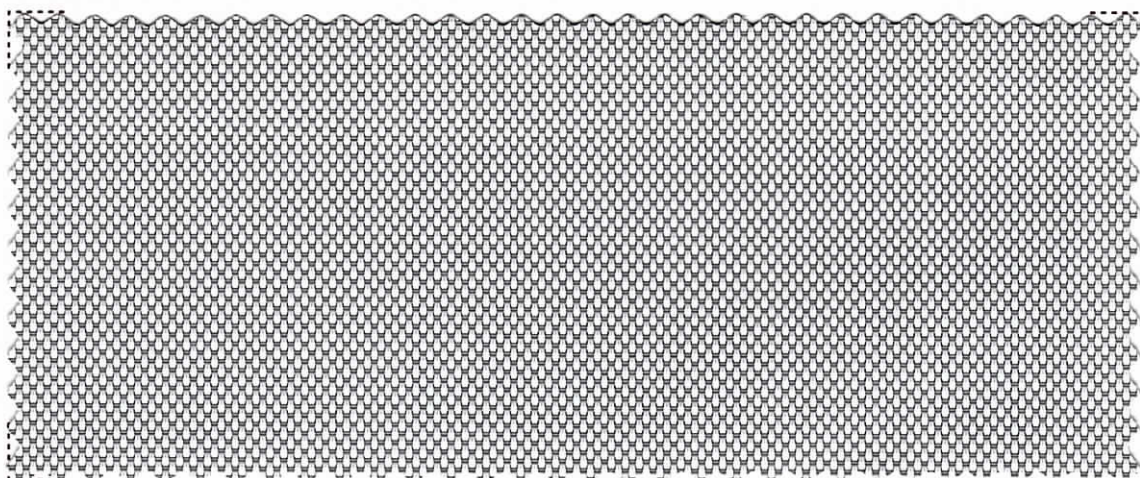
Toka5

Composizione - Composition	30% Polyester 70% PVC
Fattore d'apertura - Openess factor	+/- 5%
Altezza - Width	cm 250 - 98"/cm 300 -118"
Lunghezza rotoli - Roll length	+/- mt 27,4 +/- 30 yards
Peso - Weight	410 g/m ² +/- 5%
Spessore - Thickness	0.55mm +/- 5%
Solidità del colore - colour fastness	Class 4.5 (AATCC 16-2003)
Comportamento alla fiamma - Flame resistance	Ignifugo - Flame retardand
Manutenzione - Washing instructions	Pulire con panno umido - Clean with damp cloth

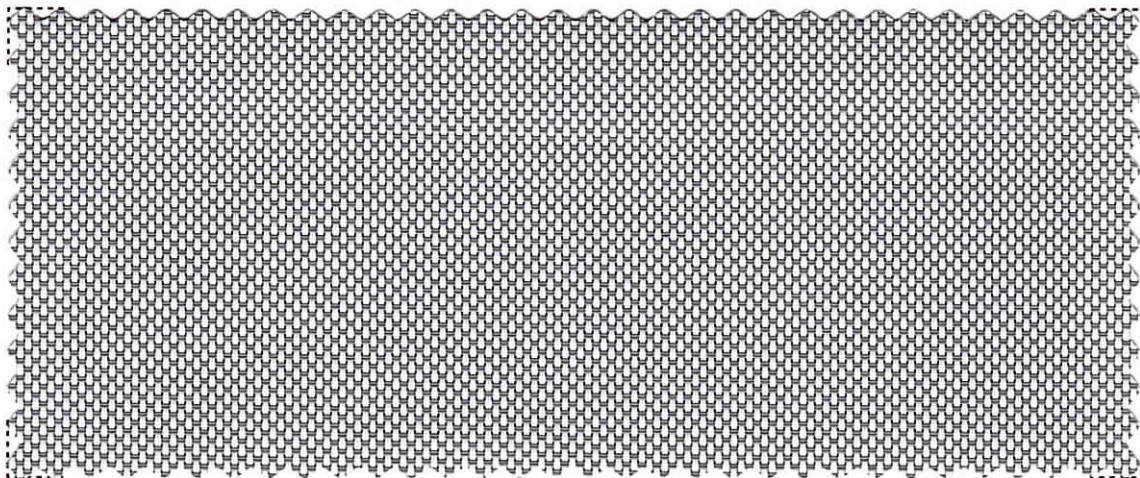
Toka1



Toka3

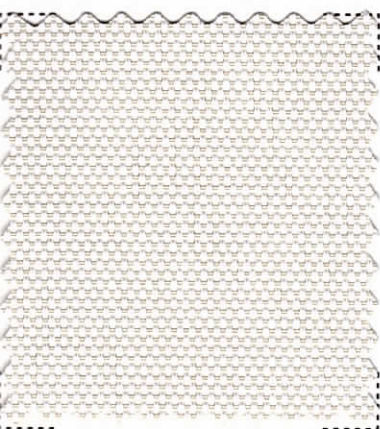


Toka5

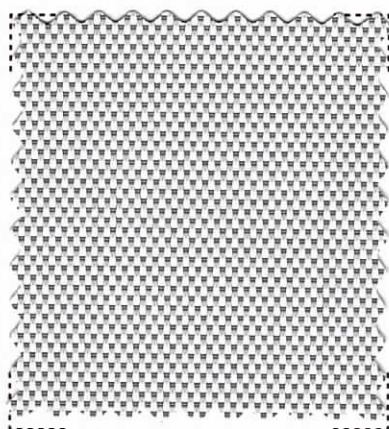




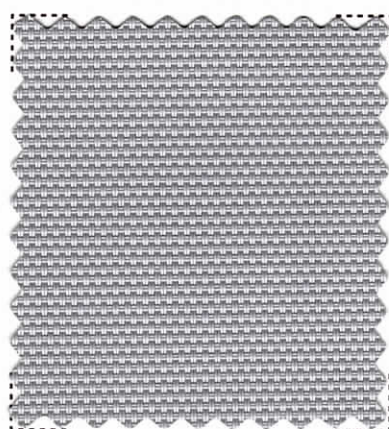
01



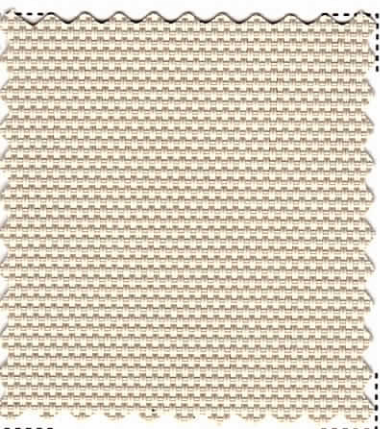
02



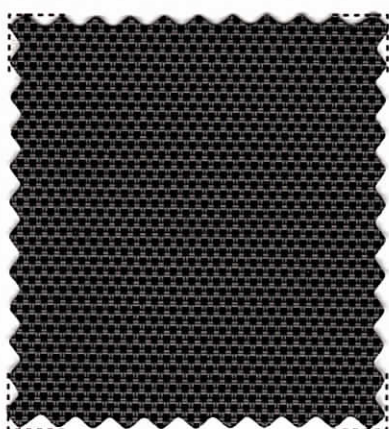
03



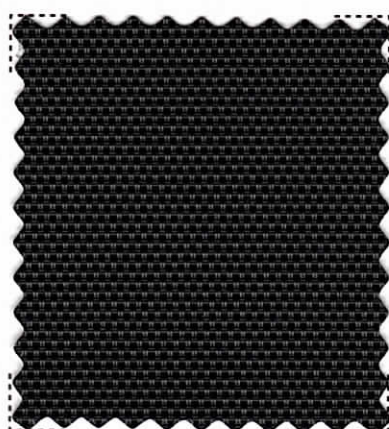
14



15

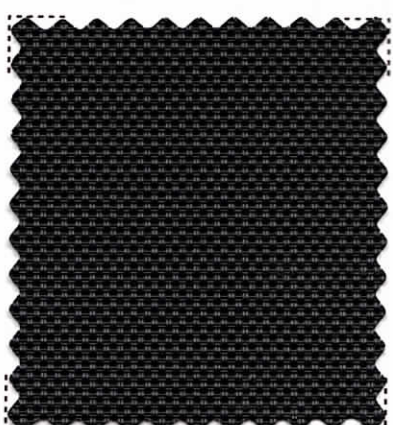
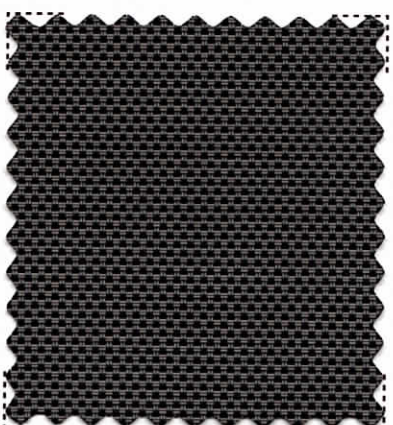
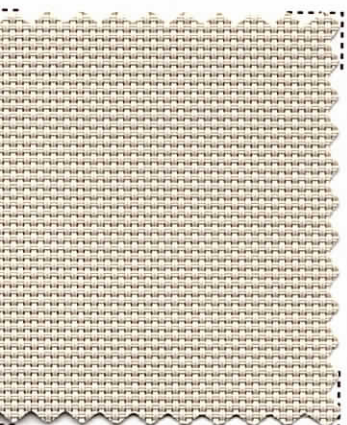
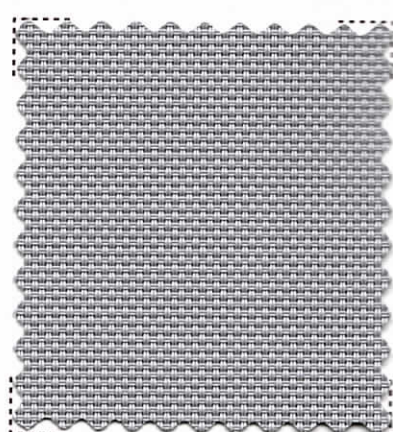
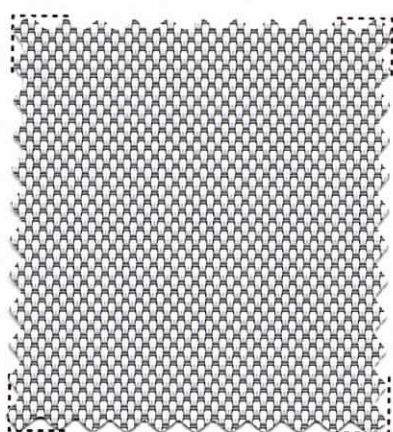
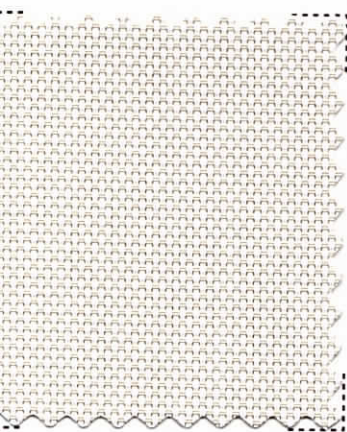
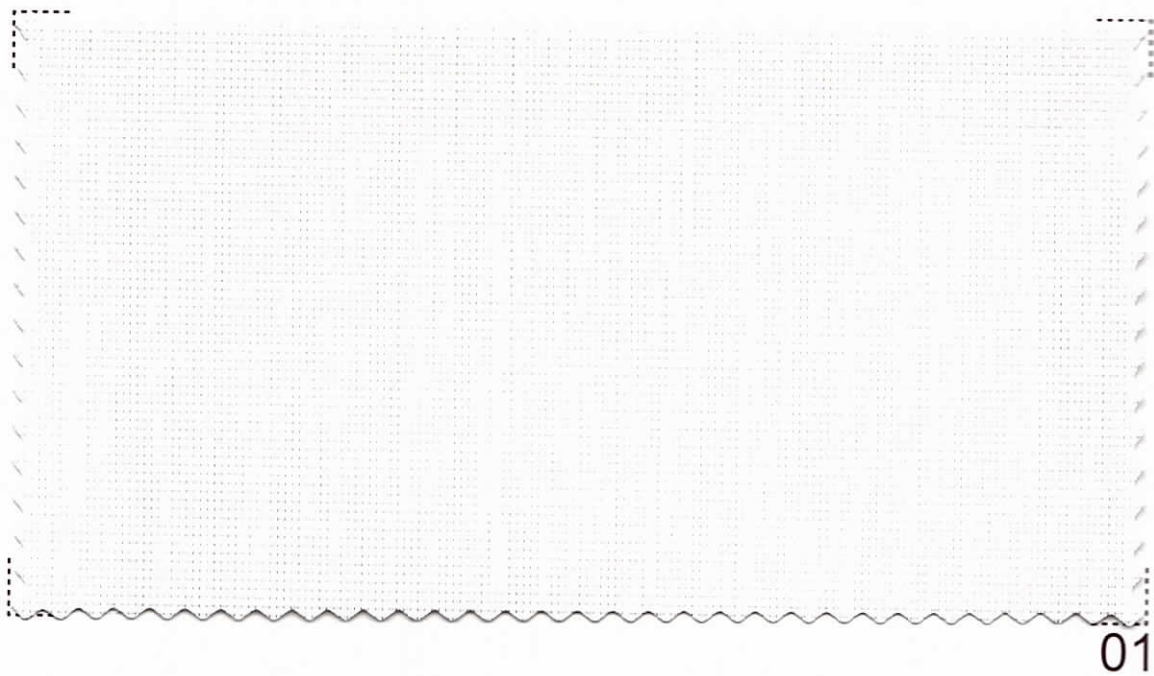


08

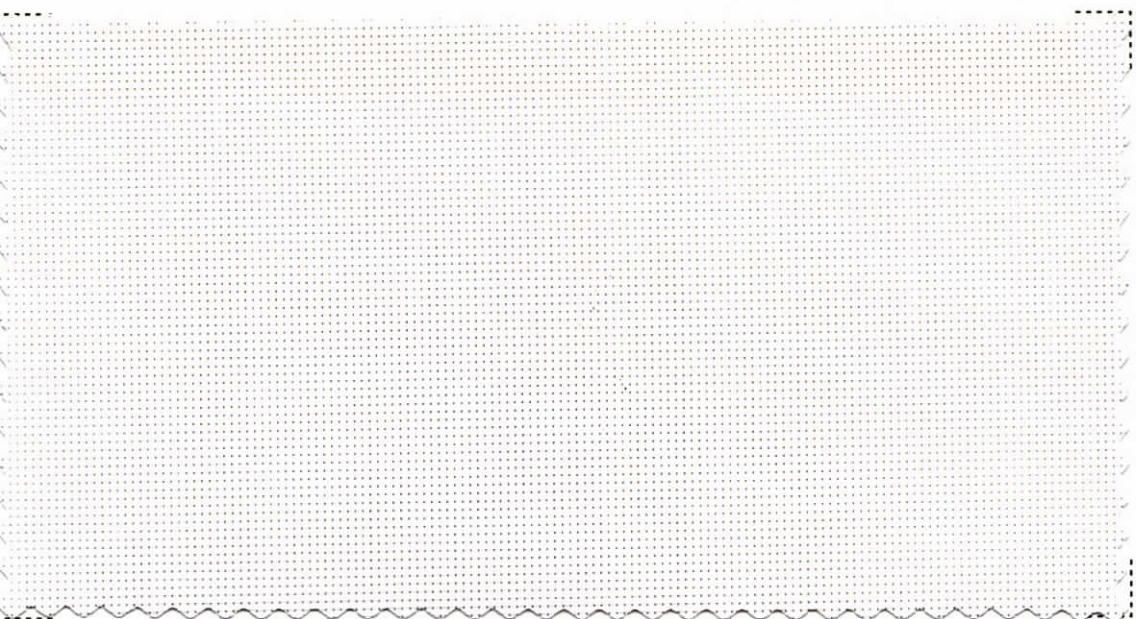


07

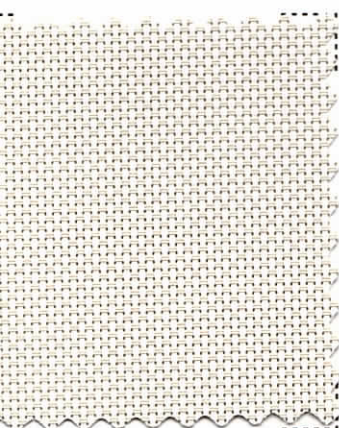
Toka3



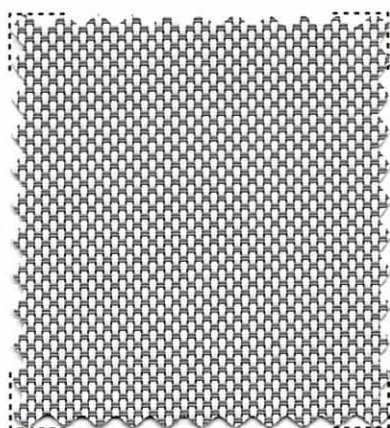
Toka5



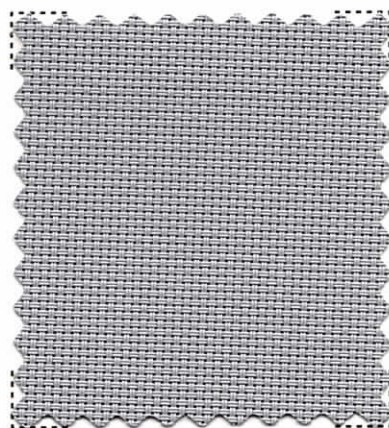
01



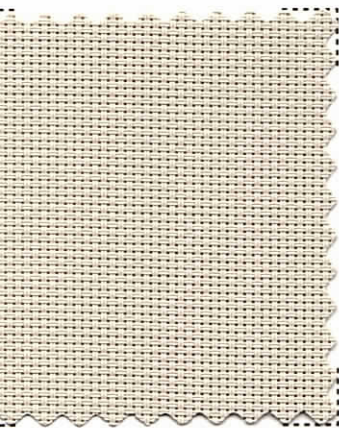
02



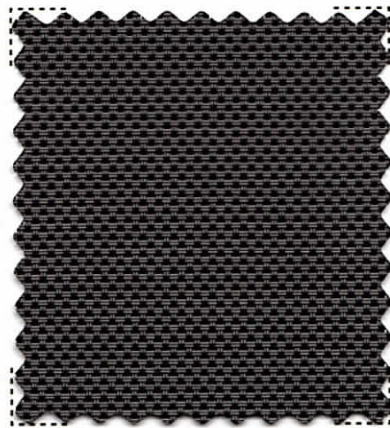
03



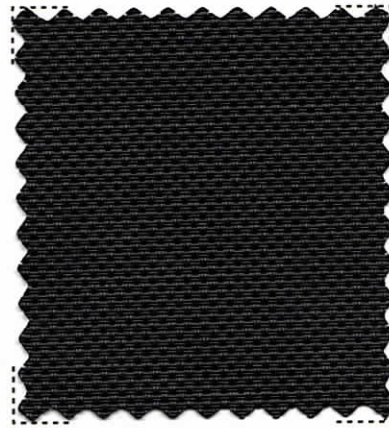
14



15

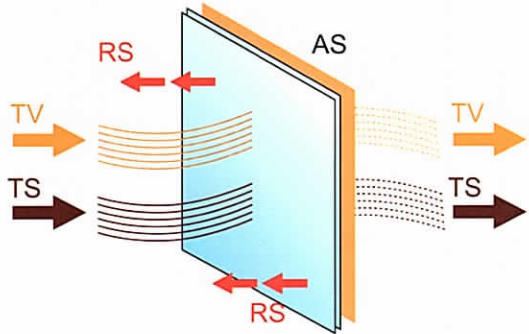


08



07

Fattori termici e ottici - Thermal and optical factors



Metodo di misurazione / Methods of Measuring: ASHRAE Standard 74-1988

Ts - Trasmissione solare / Solar Transmittance

Rs - Riflessione solare / Solar Reflectance

As - Assorbimento solare / Solar Absorptance

Tv - Trasmissione luce / Visible Transmittance

Tuv - Trasmissione UV / UV transmittance

Sc - Coefficiente d'ombra / Shading Coefficients

1/8" Cl - inch Vetro chiaro / Clear Glass

1/4" Cl - inch Vetro chiaro / Clear Glass

1/4" H.A. - inch Termoassorbente / Heat Absorbing

■ Luce-Light

■ Calore-Heat

■ Tessuto-Fabric

Toka1

Colore	Ts%	Rs%	As%	Tv %	Tuv %	SC - %		
						1/8"Cl	1/4"Cl	1/4"H.A
01	19	66	15	15	1	0.34	0.34	0.32
02	16	59	25	12	1	0.38	0.38	0.34
03	10	47	43	8	1	0.45	0.44	0.38
07	4	4	92	7	3	0.7	0.65	0.46
08	5	4	91	5	2	0.69	0.63	0.44
14	7	28	65	6	3	0.52	0.49	0.39
15	12	42	46	10	4	0.5	0.45	0.37

Toka3

Colore	Ts%	Rs%	As%	Tv %	Tuv %	SC - %		
						1/8"Cl	1/4"Cl	1/4"H.A
01	21	65	14	19	4	0.35	0.35	0.33
02	18	57	25	15	4	0.4	0.4	0.35
03	10	41	49	10	4	0.5	0.48	0.4
07	5	4	91	7	4	0.72	0.69	0.5
08	6	4	90	8	5	0.71	0.67	0.48
14	9	28	63	9	5	0.54	0.52	0.41
15	15	42	43	12	5	0.52	0.48	0.38

Toka5

Colore	Ts%	Rs%	As%	Tv %	Tuv %	SC - %		
						1/8"Cl	1/4"Cl	1/4"H.A
01	25	62	13	25	7	0.38	0.38	0.34
02	23	53	24	22	8	0.44	0.43	0.37
03	13	38	49	15	7	0.52	0.51	0.41
07	8	5	87	12	7	0.75	0.71	0.52
08	9	7	84	13	8	0.73	0.69	0.51
14	12	32	56	14	8	0.56	0.54	0.43
15	19	47	34	18	8	0.48	0.46	0.39

