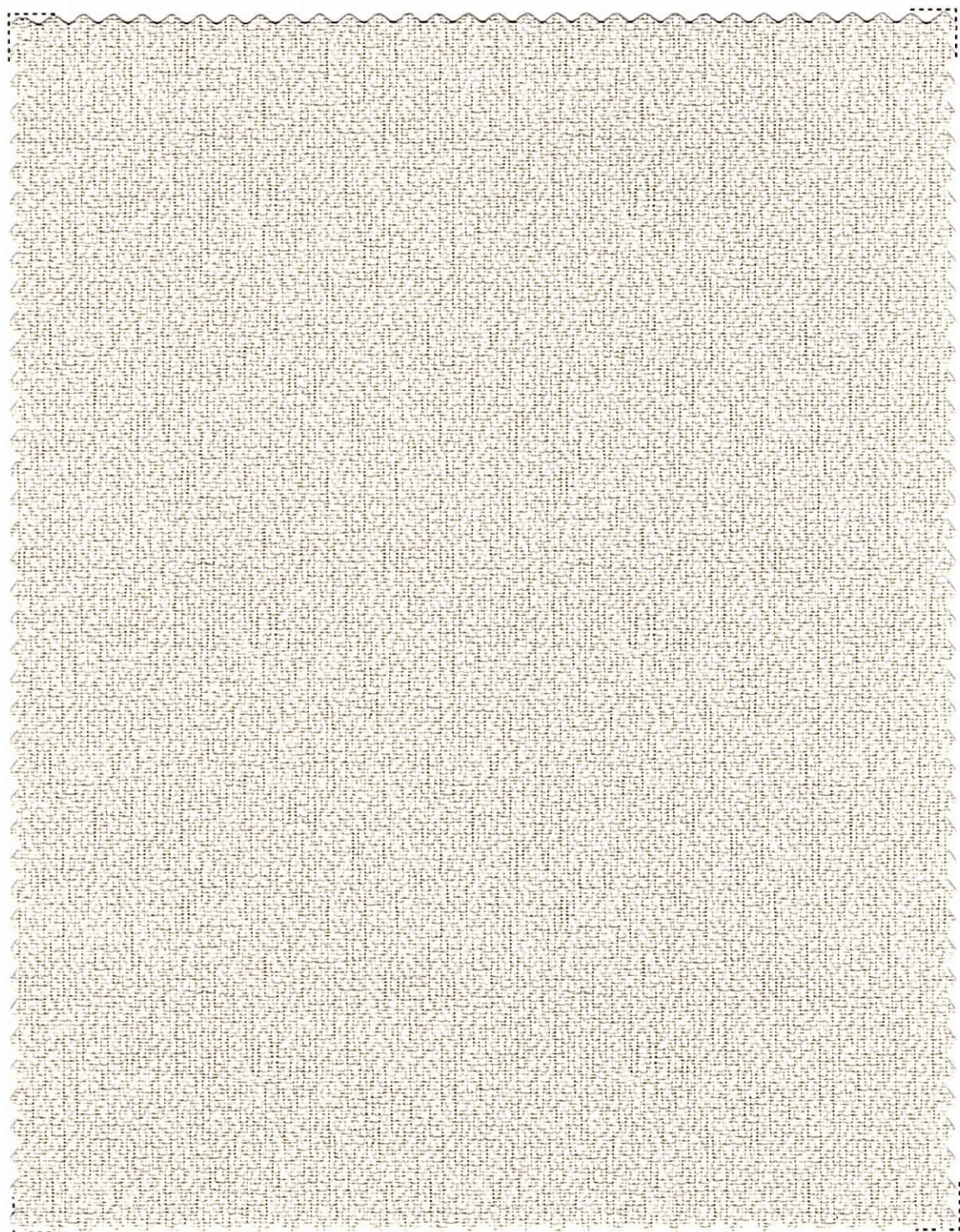
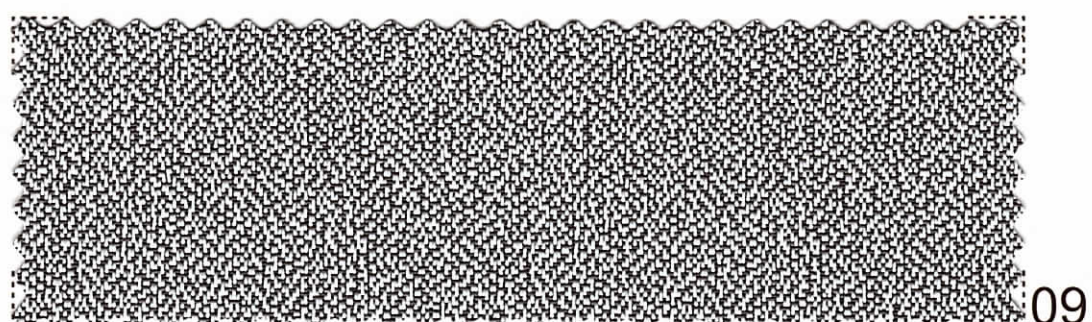
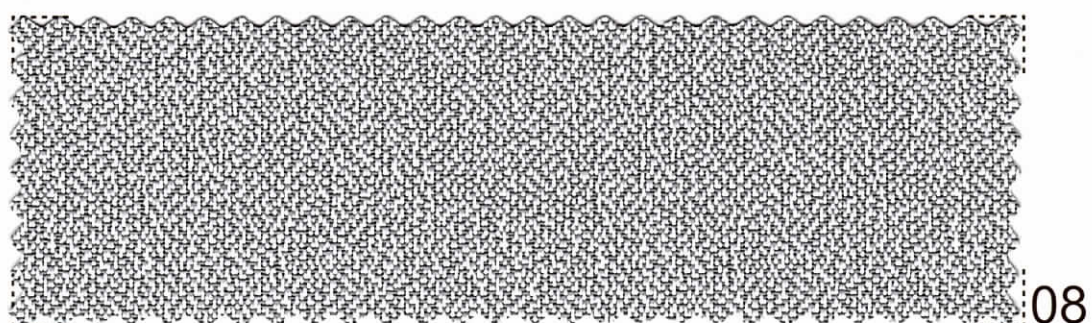
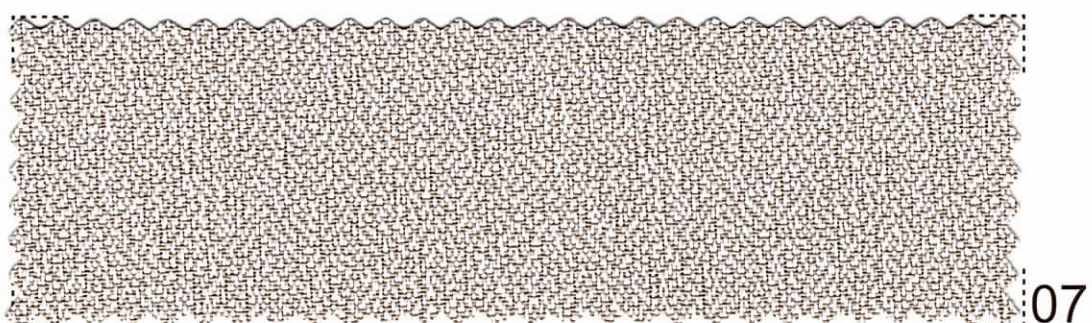
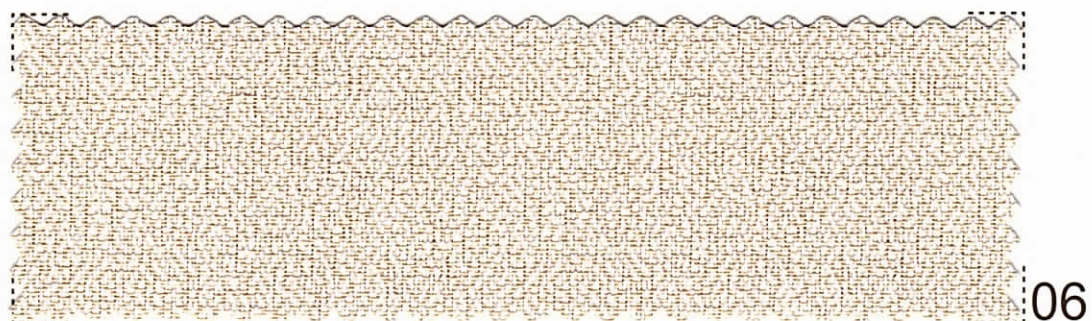
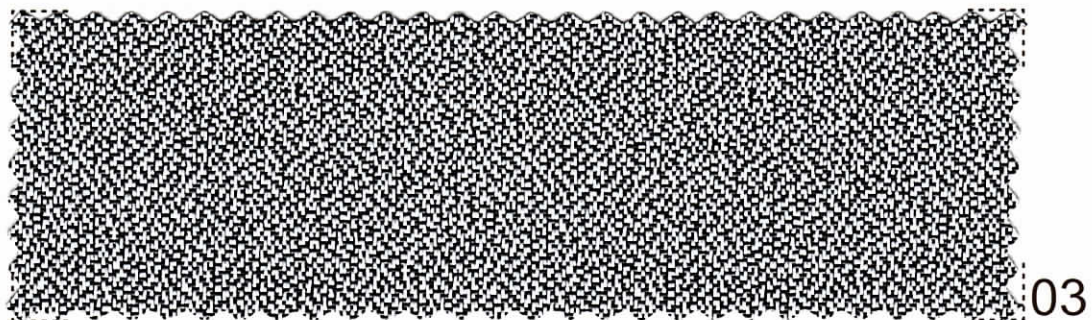


Toka Fan



Toka Fan

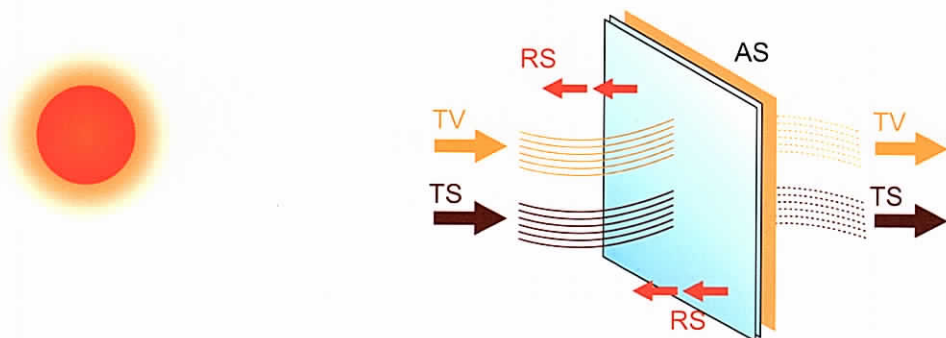




Informazioni Tecniche - Technical Specification

Composizione - Composition	30% Polyester 70% PVC
Fattore d'apertura - Openess factor	+/- 3%
Altezza - Width	cm 250 - 98"
Lunghezza rotoli - Roll length	+/- mt 27,4 +/- 30 yards
Peso - Weight	410 g/m ² +/- 5%
Spessore - Thickness	0.62 m m +/- 5%
Solidità del colore - colour fastness	Class 4.5 (AATCC 16-2003)
Comportamento alla fiamma - Flame resistance	Ignifugo - Flame retardand
Manutenzione - Washing instructions	Pulire con panno umido - Clean with damp cloth

Fattori termici e ottici - Thermal and optical factors



Metodo di misurazione / Methods of Measuring: ASHRAE Standard 74-1988

Ts - Trasmissione solare / Solar Transmittance

Rs - Riflessione solare / Solar Reflectance

As- Assorbimento solare / Solar Absorptance

Tv-Trasmissione luce / Visible Transmittance

Tuv - Trasmissione UV / UV transmittence

Sc - Coefficiente d'ombra / Shading Coefficients

1/8" Cl - inch Vetro chiaro / Clear Glass

1/4" Cl - inch Vetro chiaro / Clear Glass

1/4" H.A. - inch Termoassorbente / Heat Absorbing

■ Luce-Light

■ Calore-Heat

■ Tessuto-Fabric

Colore	Ts%	Rs%	As%	Tv%	Tuv%	SC - %		
						1/8"Cl	1/4"Cl	1/4"H.A
02	18	58	24	15	4	0.4	0.39	0.35
03	7	32	61	8	4	0.55	0.53	0.42
06	16	56	28	12	3	0.3	0.32	0.32
07	16	54	30	14	4	0.4	0.38	0.35
08	9	30	61	8	4	0.45	0.39	0.35
09	7	30	63	8	3	0.48	0.5	0.4

