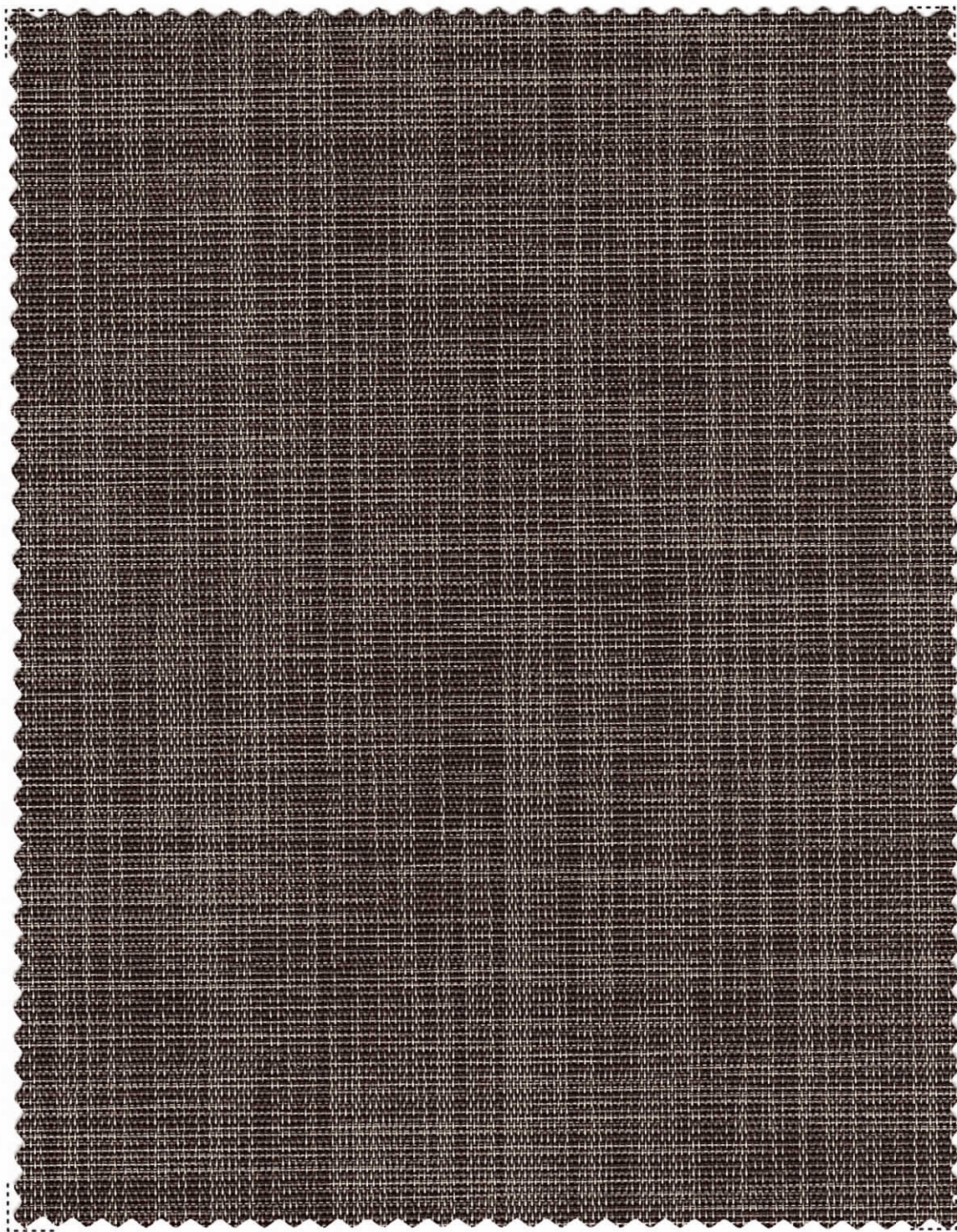
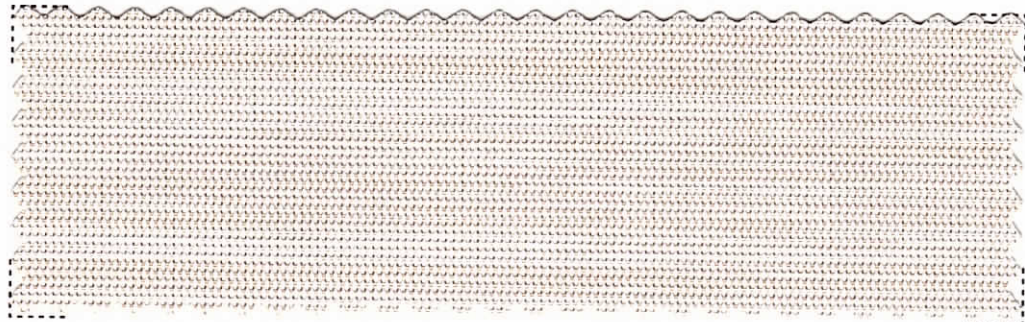


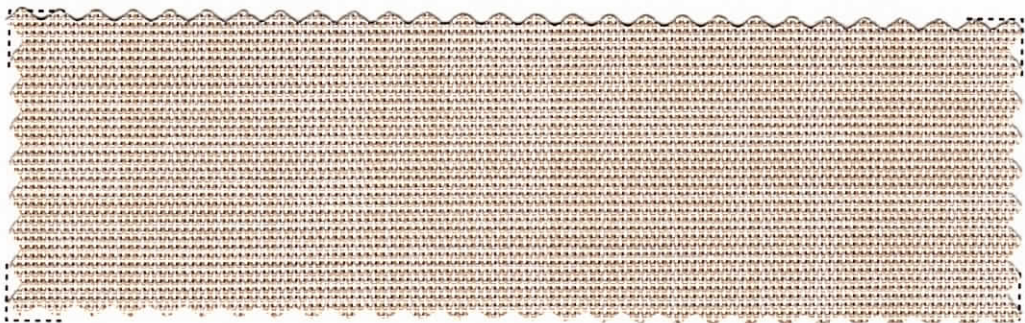
Toka Art



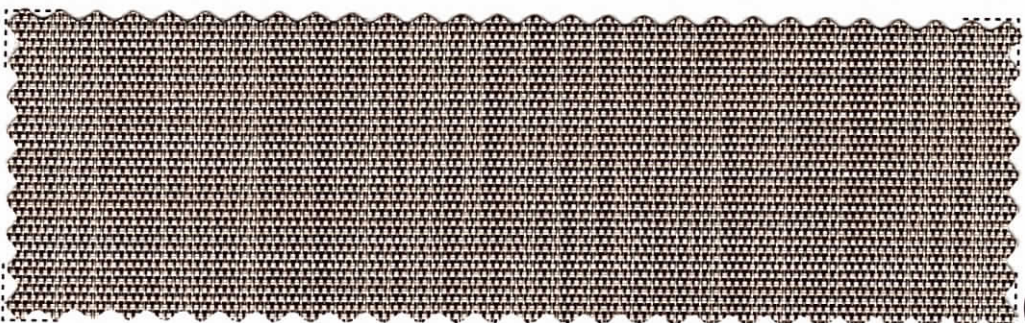




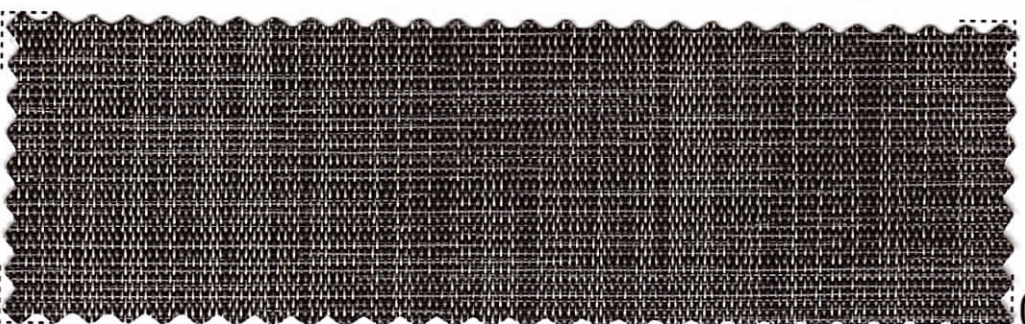
01



02



04

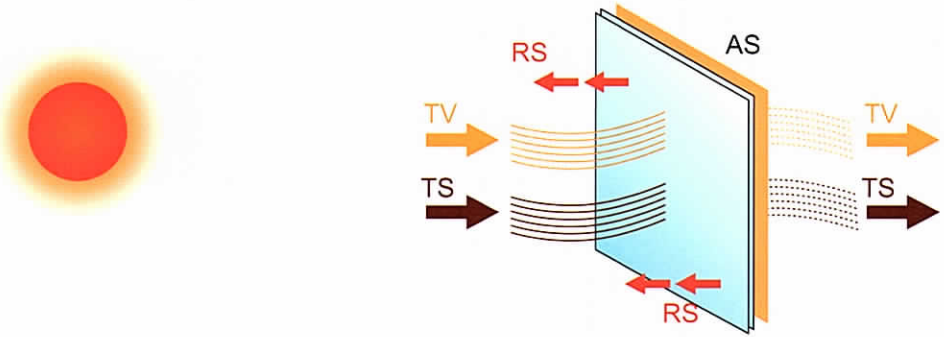


07

Informazioni Tecniche - Technical Specification

Composizione - Composition	30% Polyester 70% PVC
Fattore d'apertura - Openess factor	+/- 5%
Altezza - Width	cm 250 - 98"
Lunghezza rotoli - Roll length	+/- mt 27,4 +/- 30 yards
Peso - Weight	410 g/m ² +/- 5%
Spessore - Thickness	0.57 mm +/- 5%
Solidità del colore - colour fastness	Class 4.5 (AATCC 16-2003)
Comportamento alla fiamma - Flame resistance	Ignifugo - Flame retardand
Manutenzione - Washing instructions	Pulire con panno umido-Clean with damp cloth

Fattori termici e ottici - Thermal and optical factors



Metodo di misurazione / Methods of Measuring: ASHRAE Standard 74-1988

Ts - Trasmissione solare / Solar Transmittance

Rs - Riflessione solare / Solar Reflectance

As- Assorbimento solare / Solar Absorptance

Tv-Trasmissione luce / Visible Transmittance

Tuv - Trasmissione UV / UV transmittance

Sc - Coefficiente d'ombra / Shading Coefficients

1/8" Cl - inch Vetro chiaro / Clear Glass

1/4" Cl - inch Vetro chiaro / Clear Glass

1/4" H.A.- inch Termoassorbente / Heat Absorbing

■ Luce-Light

■ Calore-Heat

■ Tessuto-Fabric

SC - %

Colore	Ts%	Rs%	As%	Tv %	Tuv %	1/8"Cl	1/4"Cl	1/4"H.A
01	23	64	13	21	5	0.36	0.36	0.34
02	20	54	26	19	7	0.43	0.42	0.37
04	12	41	47	14	6	0.5	0.49	0.4
06	7	3	90	11	7	0.75	0.71	0.52
07	6	12	82	9	6	0.69	0.65	0.48

