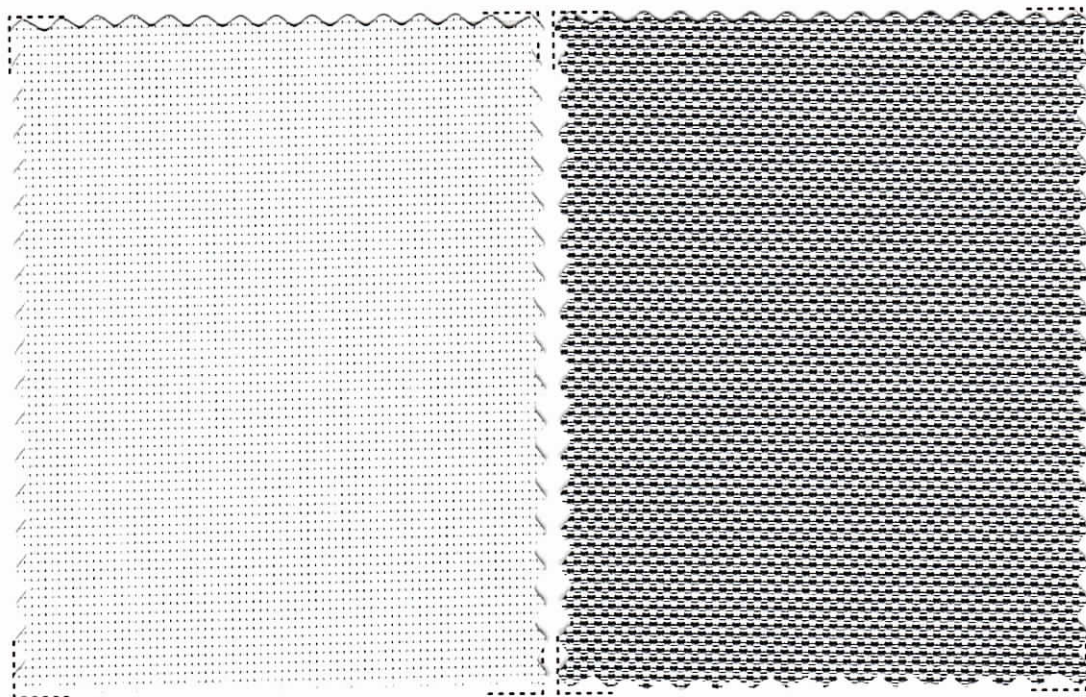


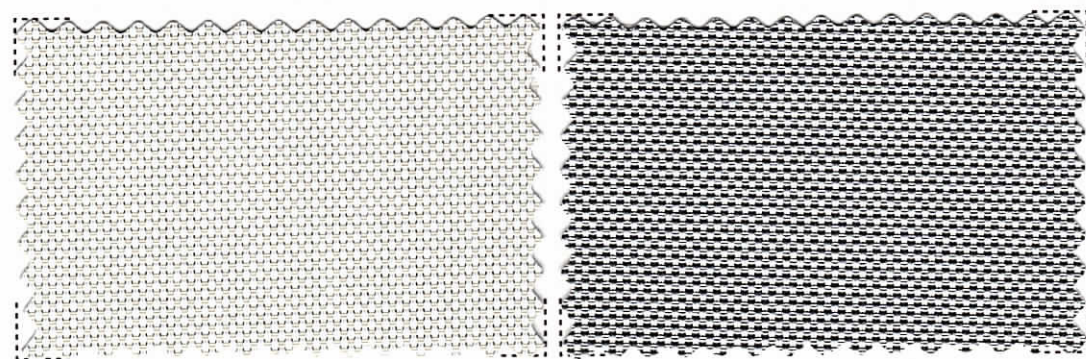
Metal - series



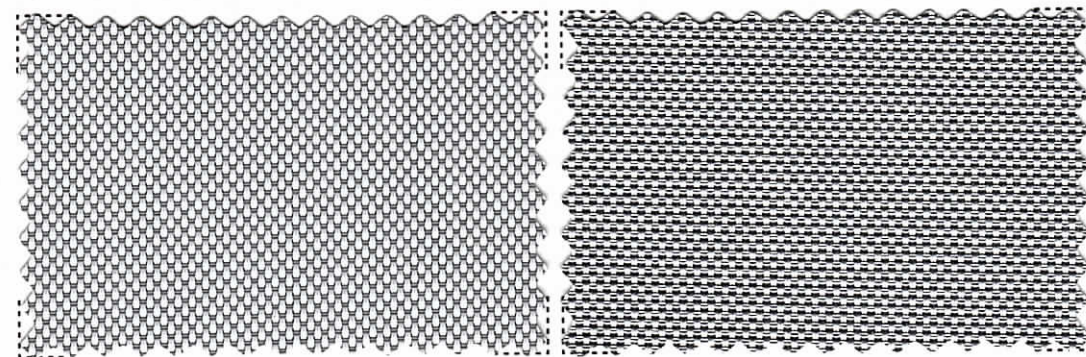
Metal 2



01

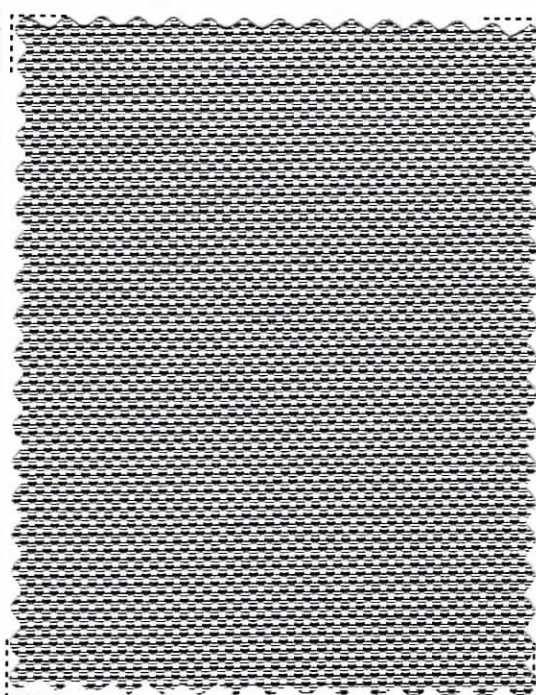
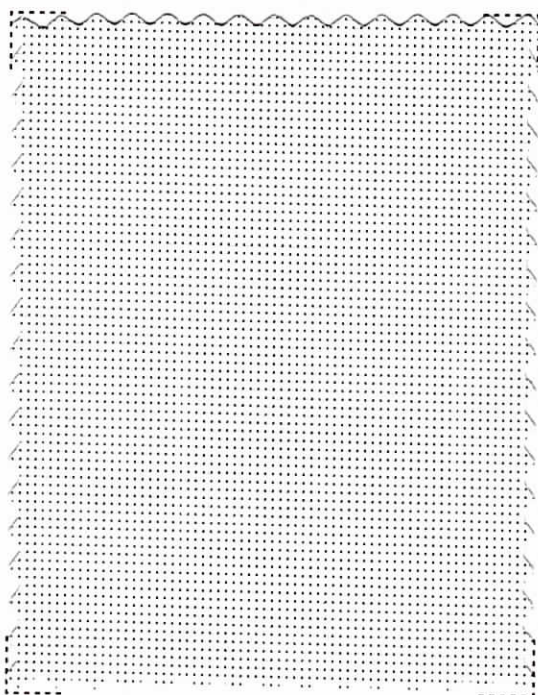


02

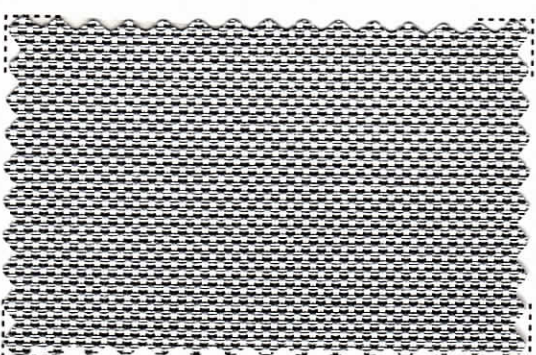
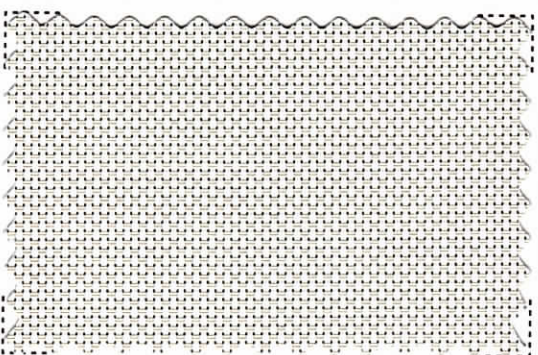


03

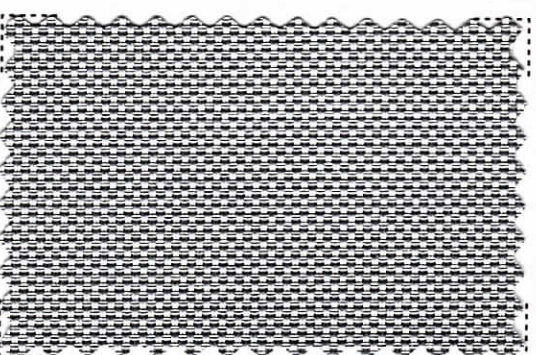
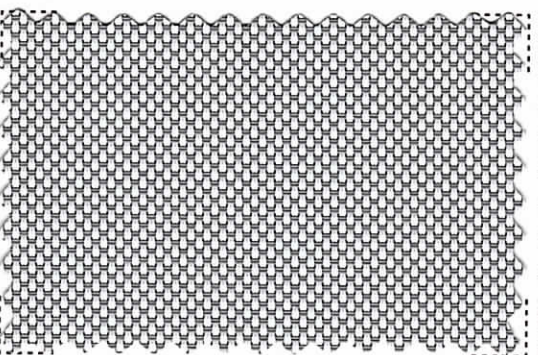
Metal 4



01



02

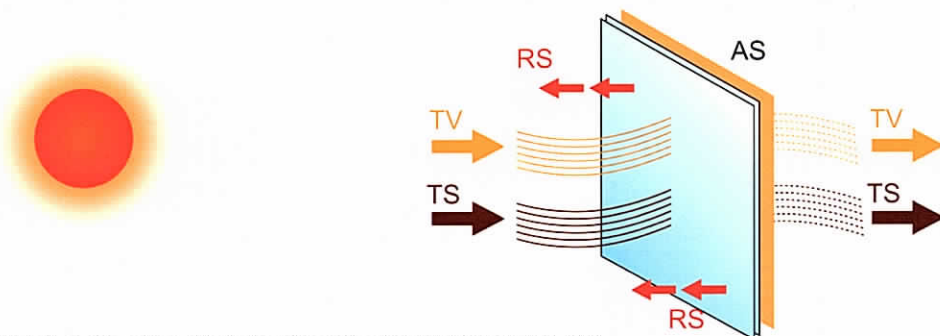


03

Informazioni Tecniche - Technical Specification

Composizione - Composition	30% Polyester 70% PVC
Fattore d'apertura - Openess factor	Metal4 +/- 4% - Metal2 +/- 2%
Altezza - Width	cm 250 - 98"
Lunghezza rotoli - Roll length	+/- mt 27,4 +/- 30 yards
Peso - Weight	Metal4 410 g/m2 +/- 5% Metal2 470 g/m2 +/- 5%
Spessore - Thickness	0.53 mm +/- 5%
Solidità del colore - colour fastness	Class 4.5 (AATCC 16-2003)
Comportamento alla fiamma - Flame resistance	Ignifugo - Flame retardand
Manutenzione - Washing instructions	Pulire con panno umido-Clean with damp cloth

Fattori termici e ottici - Thermal and optical factors



Metodo di misurazione / Methods of Measuring: ASHRAE Standard 74-1988

Ts - Trasmissione solare / Solar Transmittance

Rs - Riflessione solare / Solar Reflectance

As- Assorbimento solare / Solar Absorbance

Tv-Trasmissione luce / Visible Transmittance

Tuv - Trasmissione UV / UV trasmittance

Sc - Coefficiente d'ombra / Shading Coefficients

1/8" Cl - inch Vetro chiaro / Clear Glass

1/4" Cl - inch Vetro chiaro / Clear Glass

1/4" H.A.- inch Termoassorbente / Heat Absorbing

■ Luce-Light

■ Calore-Heat

■ Tessuto-Fabric

Metal 2	Colore	Ts%	Rs%	As%	Tv %	Tuv %	SC - %		
							1/8"Cl	1/4"Cl	1/4"H.A
	01	20	68	12	20	2	0.34	0.34	0.32
	02	4	68	28	13	2	0.38	0.38	0.33
	03	2	68	30	10	2	0.49	0.47	0.39

Metal 4	Colore	Ts%	Rs%	As%	Tv %	Tuv %	SC - %		
							1/8"Cl	1/4"Cl	1/4"H.A
	01	23	66	11	21	6	0.37	0.37	0.33
	02	8	65	27	14	6	0.42	0.41	0.35
	03	6	65	29	11	6	0.51	0.50	0.40

