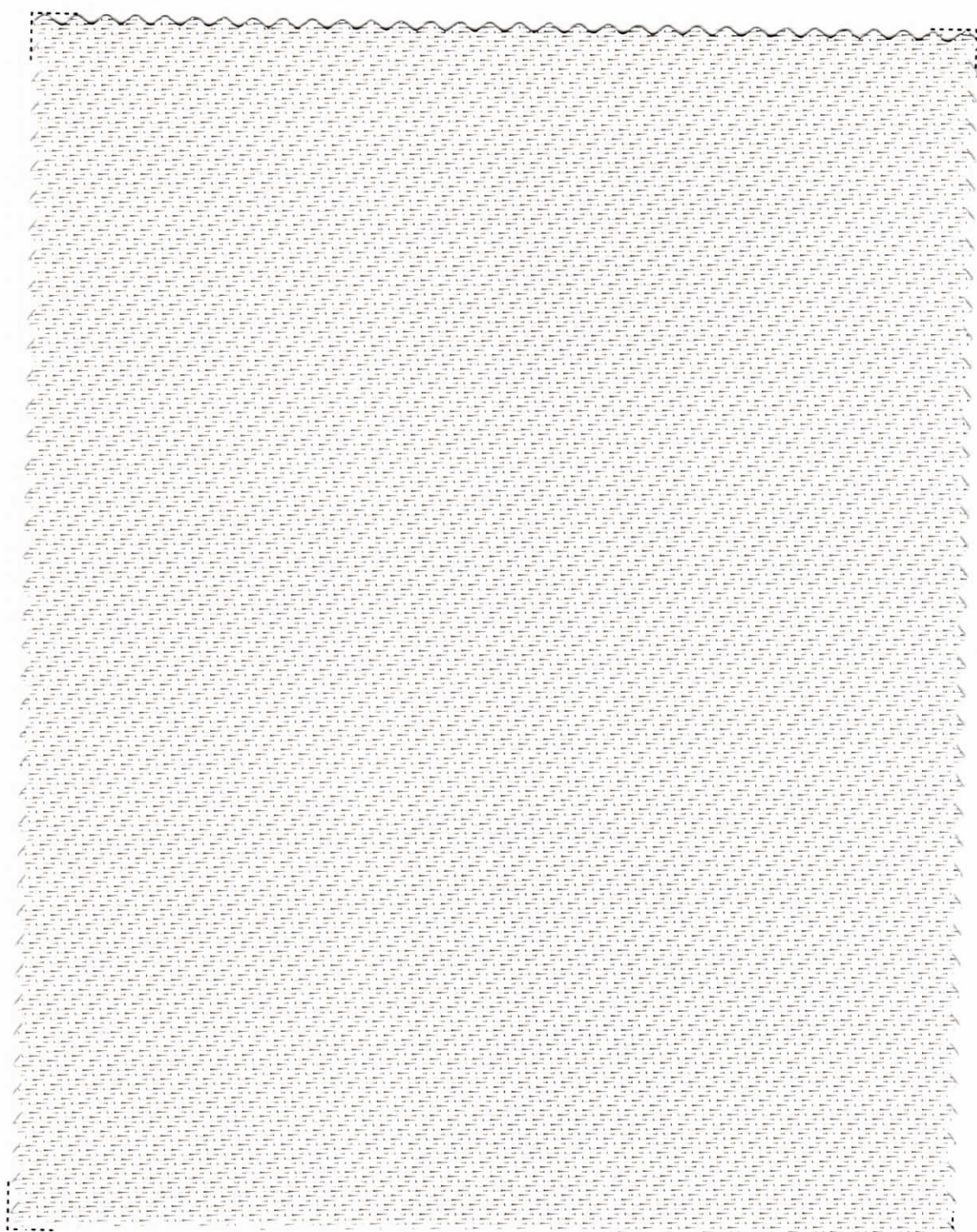
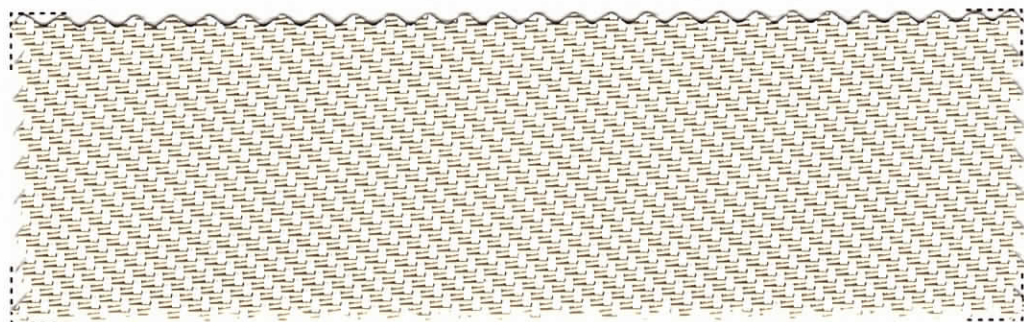


H Glass

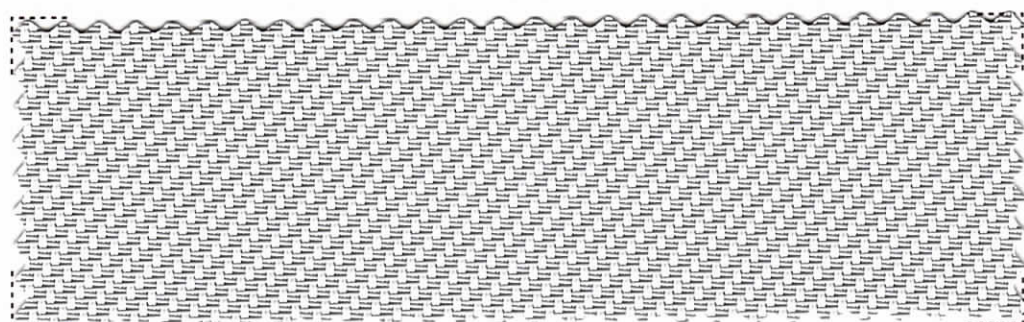


H Glass

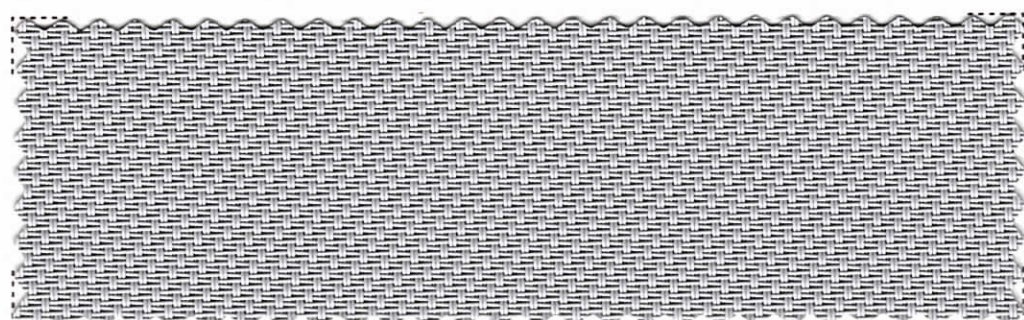




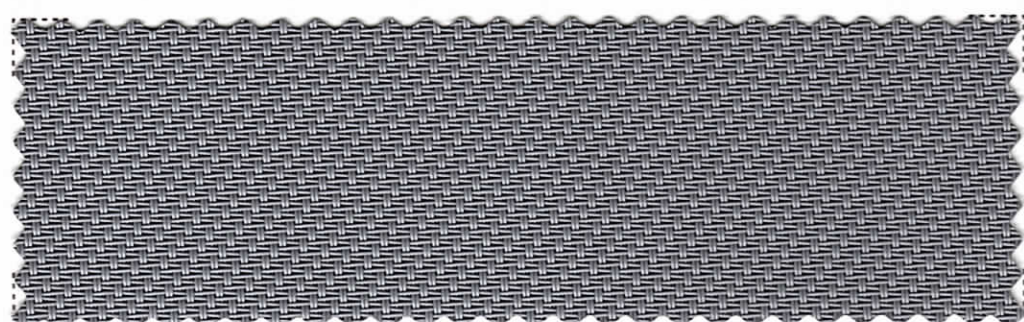
02



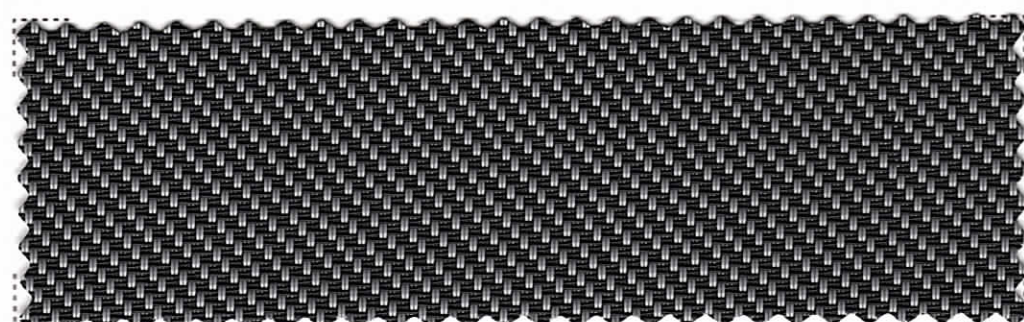
07



09



35

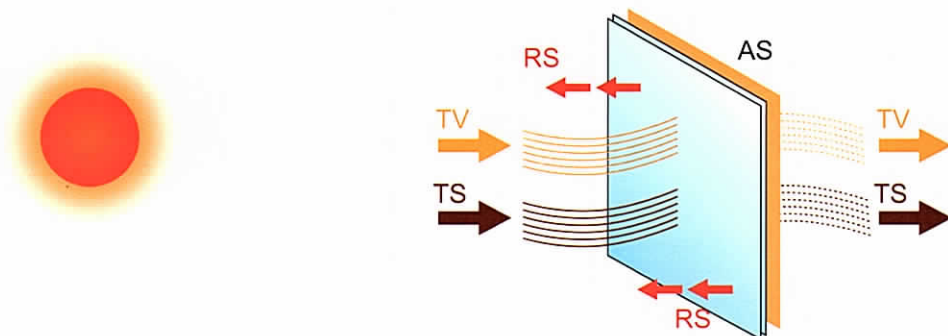


27

Informazioni Tecniche - Technical Specification

Composizione - Composition	20% Fibra Vetro / Fiber Glass 80% PVC
Fattore d'apertura - Openess factor	+/- 3%
Altezza - Width	cm 250 - 98"
Lunghezza rotoli - Roll length	+/- mt 27,4 +/- 30 yards
Peso - Weight	670 g/m ² +/- 5%
Spessore - Thickness	0.81 mm +/- 5%
Solidità del colore - colour fastness	Class 4.5 (AATCC 16-2003)
Comportamento alla fiamma - Flame resistance	Ignifugo - Flame retardand
Manutenzione - Washing instructions	Pulire con panno umido-Clean with damp cloth

Fattori termici e ottici - Thermal and optical factors



Metodo di misurazione / Methods of Measuring: ASHRAE Standard 74-1988

Ts - Trasmissione solare / Solar Transmittance

Rs - Riflessione solare / Solar Reflectance

As- Assorbimento solare / Solar Absorptance

Tv-Trasmissione luce / Visible Transmittance

Tuv - Trasmissione UV / UV trasmittance

Sc - Coefficiente d'ombra / Shading Coefficients

1/8" Cl - inch Vetro chiaro / Clear Glass

1/4" Cl - inch Vetro chiaro / Clear Glass

1/4" H.A.- inch Termoassorbente / Heat Absorbing

- Luce-Light
- Calore-Heat
- Tessuto-Fabric

SC - %

Colore	Ts%	Rs%	As%	Tv %	Tuv %	1/8"Cl	1/4"Cl	1/4"H.A
01	18	54	28	12	4	0.37	0.36	0.32
02	16	48	36	10	3	0.41	0.38	0.35
07	14	34	52	9	3	0.62	0.59	0.55
09	8	24	68	9	3	0.62	0.59	0.55
35	7	20	73	8	3	0.6	0.58	0.5
27	6	16	78	6	4	0.72	0.7	0.66

