

Duplex - Series



Informazioni Tecniche - Technical Specification

Duplex

Composizione - Composition	30% Polyester 70% PVC
Fattore d'apertura - Openess factor	+/- 1%
Altezza - Width	cm 250 - 98"
Lunghezza rotoli - Roll length	+/- mt 27.4 +/- 30 yards
Peso - Weight	500 g/m ² +/- 5%
Spessore - Thickness	0.64mm +/- 5%
Solidità del colore - colour fastness	Class 4.5 (AATCC 16-2003)
Comportamento alla fiamma - Flame resistance	Ignifugo - Flame retardand
Manutenzione - Washing instructions	Pulire con panno umido - Clean with damp cloth

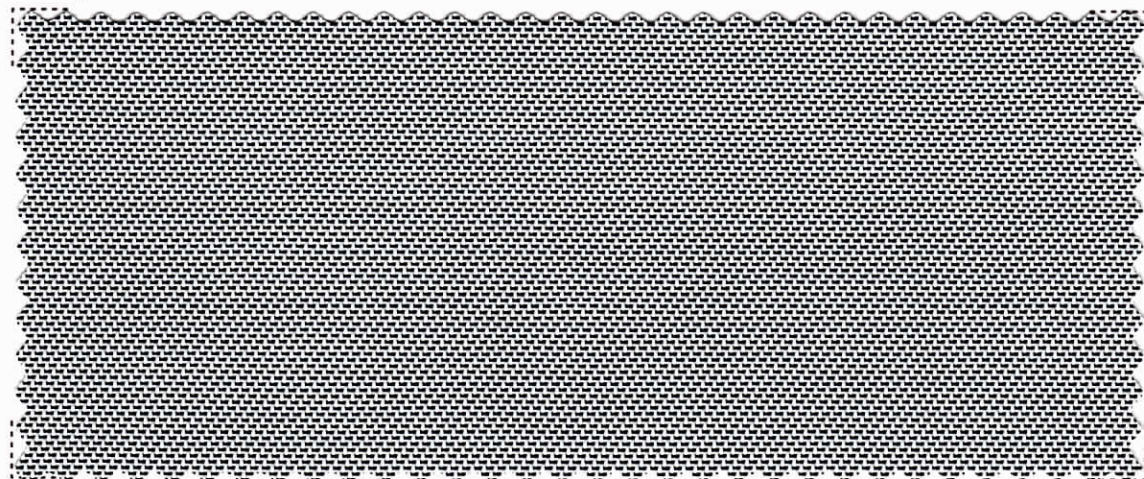
Duplex1

Composizione - Composition	30% Polyester 70% PVC
Fattore d'apertura - Openess factor	+/- 1%
Altezza - Width	cm 250 - 98"
Lunghezza rotoli - Roll length	+/- mt 27,4 +/- 30 yards
Peso - Weight	450 g/m ² +/- 5%
Spessore - Thickness	0.64mm +/- 5%
Solidità del colore - colour fastness	Class5 (AATCC 16-2003)
Comportamento alla fiamma - Flame resistance	Ignifugo - Flame retardand
Manutenzione - Washing instructions	Pulire con panno umido - Clean with damp cloth

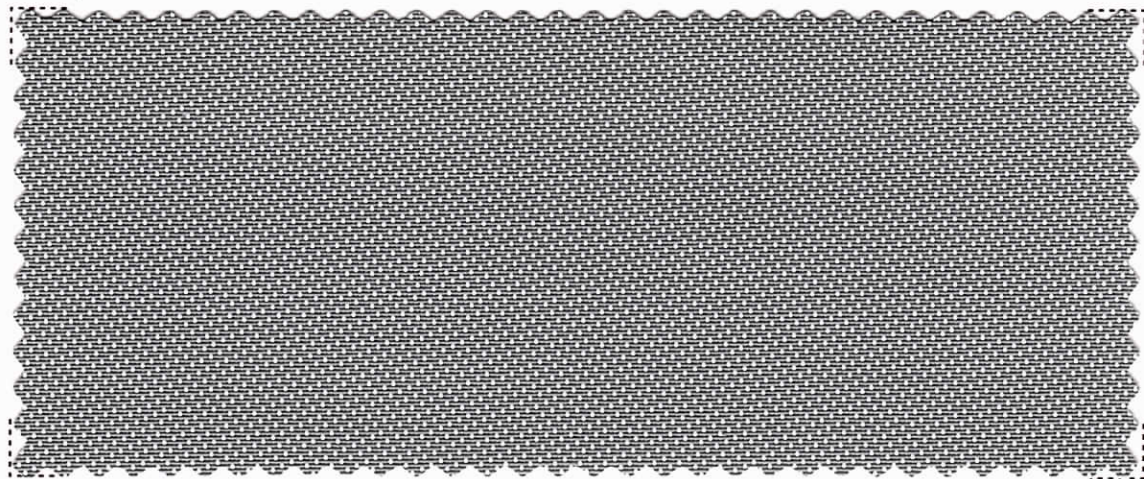
Duplex3

Composizione - Composition	30% Polyester 70% PVC
Fattore d'apertura - Openess factor	+/- 3%
Altezza - Width	cm 250 - 98"
Lunghezza rotoli - Roll length	+/- mt 27,4 +/- 30 yards
Peso - Weight	430 g/m ² +/- 5%
Spessore - Thickness	0.62mm +/- 5%
Solidità del colore - colour fastness	Class5 (AATCC 16-2003)
Comportamento alla fiamma - Flame resistance	Ignifugo - Flame retardand
Manutenzione - Washing instructions	Pulire con panno umido - Clean with damp cloth

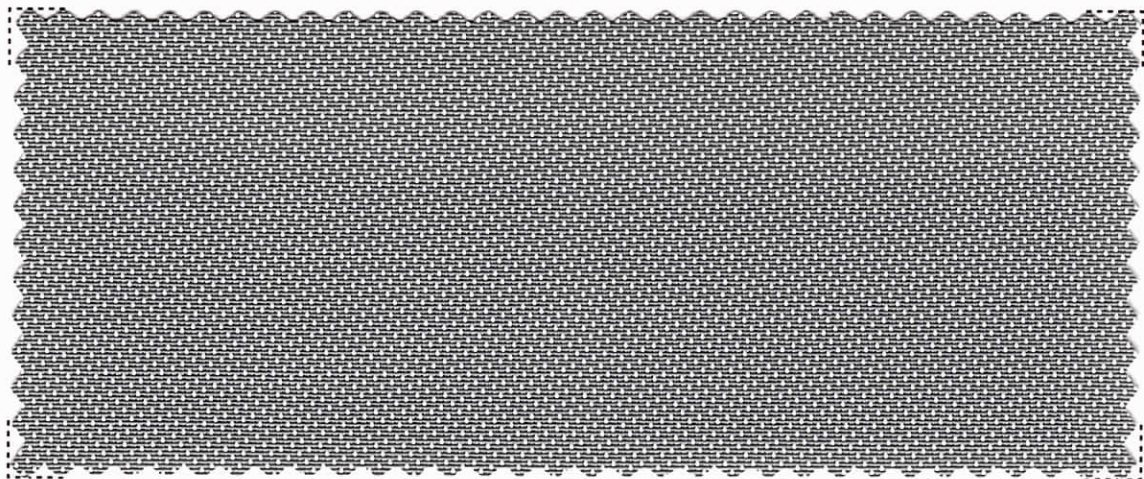
Duplex



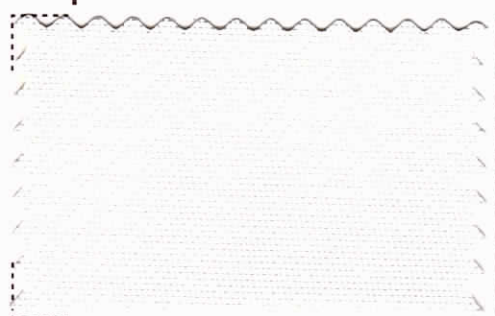
Duplex1



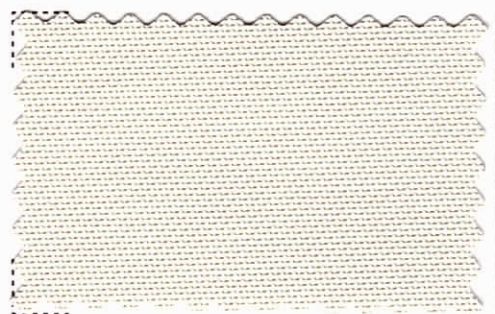
Duplex3



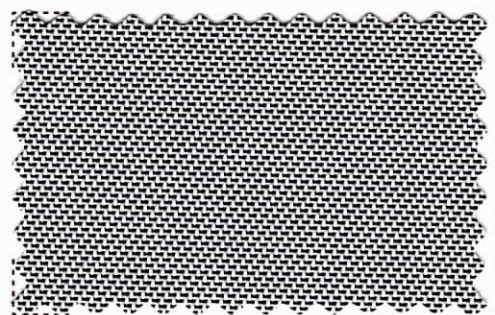
Duplex



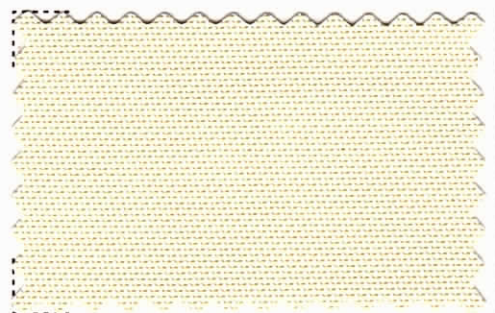
01



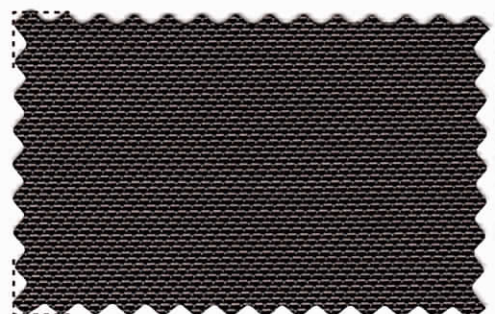
02



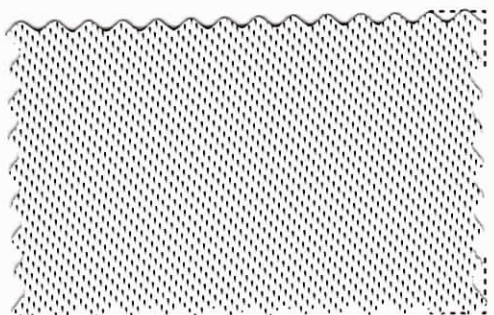
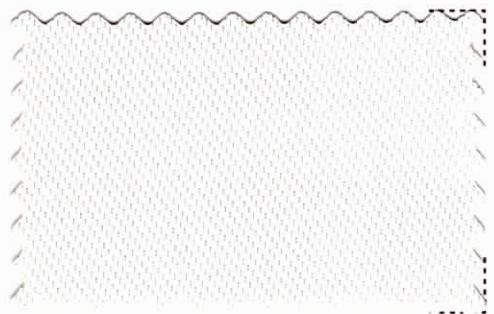
04



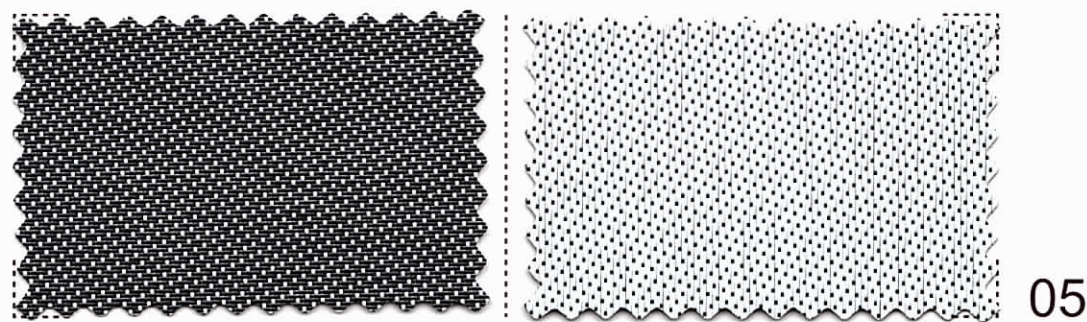
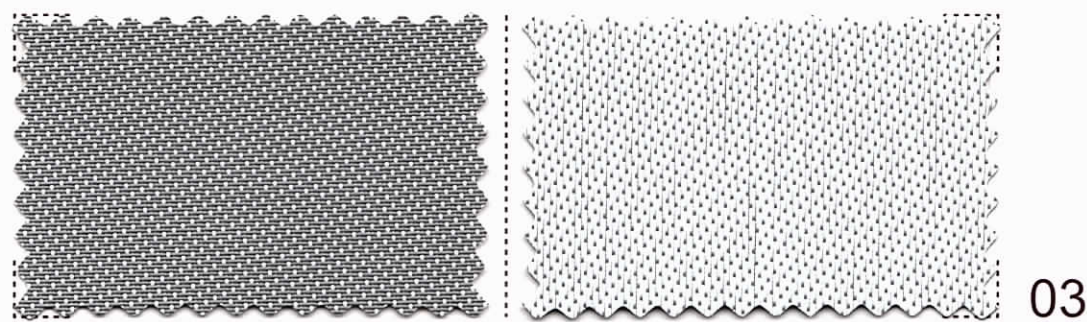
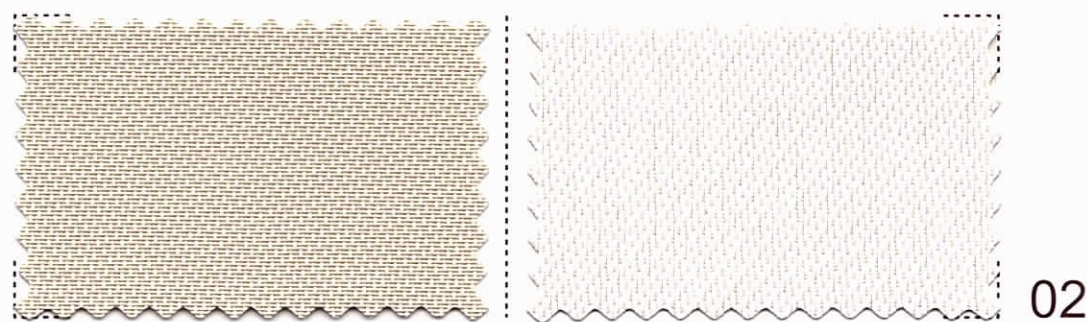
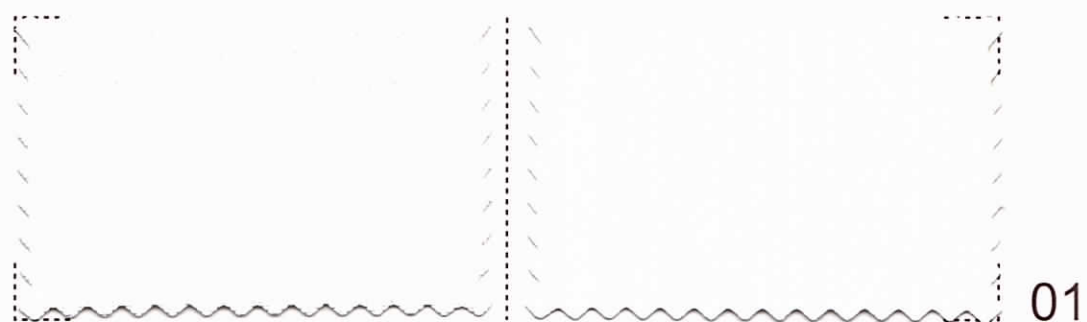
11



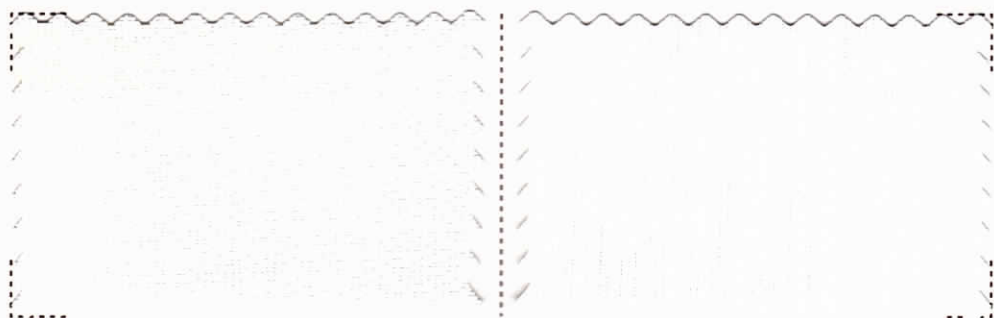
14



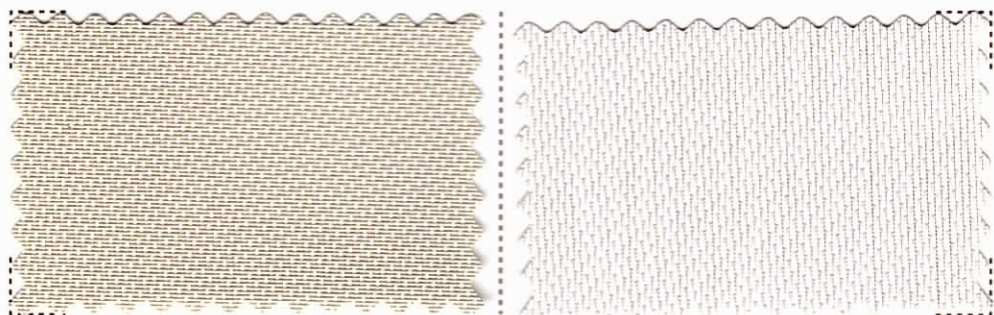
Duplex1



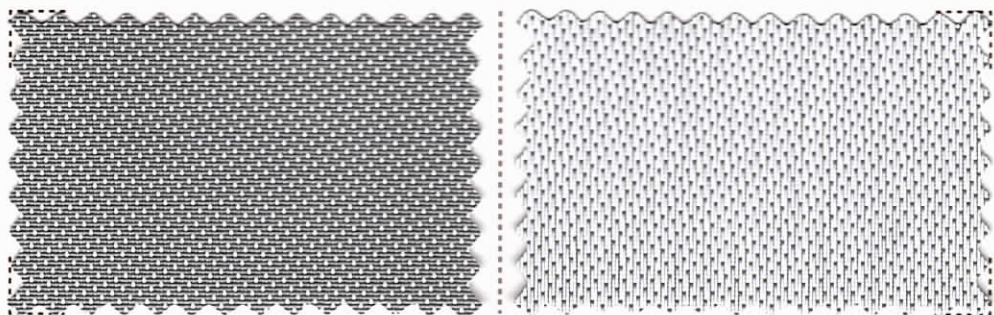
Duplex3



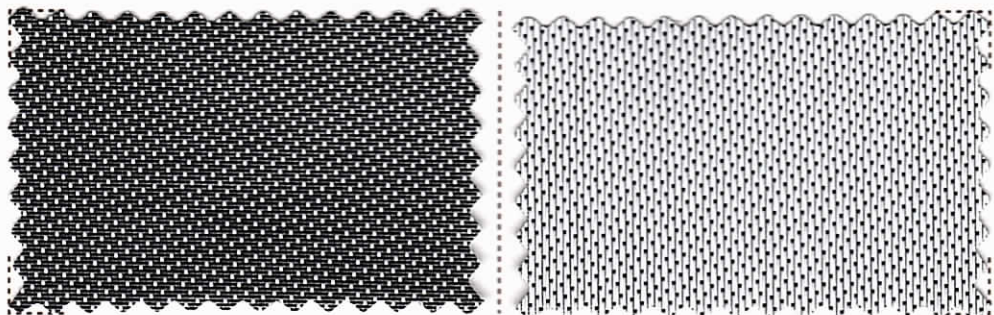
01



02

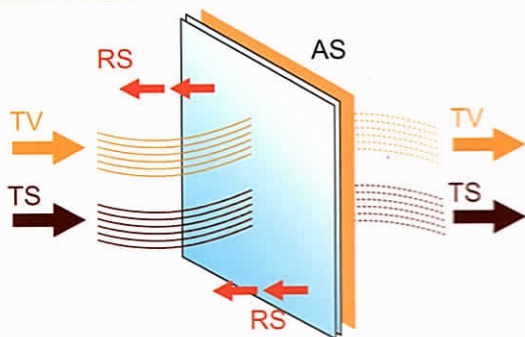


03



05

Fattori termici e ottici - Thermal and optical factors



Metodo di misurazione / Methods of Measuring: ASHRAE Standard 74-1988

Ts - Trasmissione solare / Solar Transmittance

Rs - Riflessione solare / Solar Reflectance

As - Assorbimento solare / Solar Absorptance

Tv - Trasmissione luce / Visible Transmittance

Tuv - Trasmissione UV / UV transmittance

Sc - Coefficiente d'ombra / Shading Coefficients

1/8" Cl - inch Vetro chiaro / Clear Glass

1/4" Cl - inch Vetro chiaro / Clear Glass

1/4" H.A.- inch Termoassorbente / Heat Absorbing

■ Luce-Light

■ Calore-Heat

■ Tessuto-Fabric

Duplex

Colore	Ts%	Rs%	As%	Tv %	Tuv %	SC - %		
						1/8"Cl	1/4"Cl	1/4"H.A
01	0	80	20	0	0	0.20	0.21	0.08
02	0	78	22	0	0	0.21	0.22	0.19
04	0	76	24	0	0	0.22	0.22	0.19
11	0	74	26	0	0	0.23	0.24	0.21
14	0	70	30	0	0	0.23	0.24	0.20

Duplex1

Colore	Ts%	Rs%	As%	Tv %	Tuv %	SC - %		
						1/8"Cl	1/4"Cl	1/4"H.A
01	20	64	16	14	1	0.34	0.34	0.32
02	18	56	26	14	1	0.38	0.38	0.34
03	12	43	45	9	1	0.45	0.44	0.38
05	9	27	64	7	2	0.69	0.63	0.44

Duplex3

Colore	Ts%	Rs%	As%	Tv %	Tuv %	SC - %		
						1/8"Cl	1/4"Cl	1/4"H.A
01	18	63	19	18	4	0.35	0.35	0.33
02	20	58	22	16	4	0.4	0.4	0.35
03	12	40	48	10	4	0.48	0.46	0.4
05	10	24	66	8	3	7	0.65	0.46

